

## FEATURES:

- Single port Tab-Down with internal magnetics for 1000 Base-T
- 350uH minimum OCL with 8mA bias current
- Internal magnetics options available
- Minimum 1500Vrms isolation
- Recognized by UL 60950-1



## YUAN DEAN SCIENTIFIC



**RJ45 Jack**  
**48F SERIES**  
 With Magnetics  
 Through Hole  
 Single Port  
 100/1000 Base-T  
 TAB Down



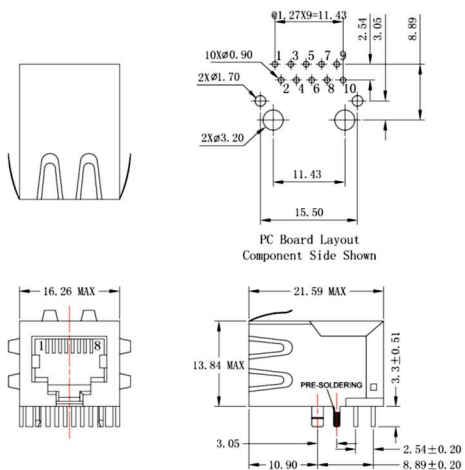
**ELECTRICAL SPECIFICATIONS@25°C**  
 Operating temperature 0°C TO 70°C

Part Number	Turns Ratio(±5%)	Insertion Loss (dB MAX)	Return Loss (dB MIN @100Ω±15Ω)				Differential to Common Mode Rejection (dB MIN)			Cross talk (dB MIN)			Hipot (V <sub>RMS</sub> )
			0.3-100MHz	1-30 MHz	40 MHz	50 MHz	60-80 MHz	30 MHz	60 MHz	100 MHz	30 MHz	60 MHz	
48F-01ND2NL	1CT:1CT	-1.2	-16	-13.5	-11.5	-10	-35	-32	-30	-40	-36	-30	1500
48F-01GYDS2NL	1CT:1CT	-1.2	-16	-13.5	-11.5	-10	-35	-32	-30	-40	-36	-30	1500
48F-01GYDP2NL	1CT:1CT	-1.2	-16	-13.5	-11.5	-10	-35	-32	-30	-40	-36	-30	1500

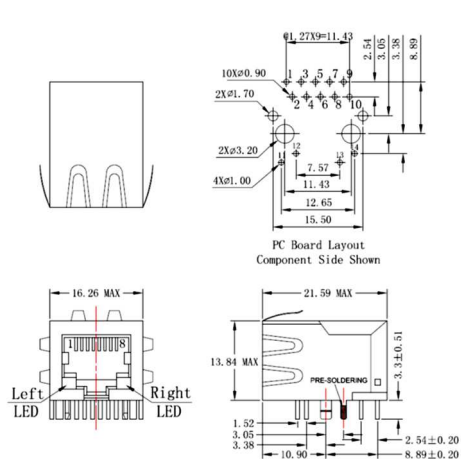


Mechanical and Dimension

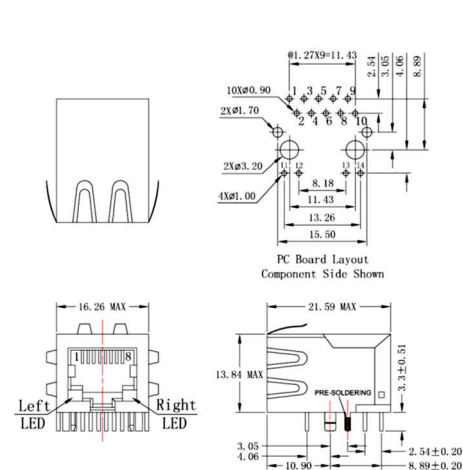
NO LED JACK  
48F-01ND2NL



LED-S JACK  
48F-01GYDS2NL

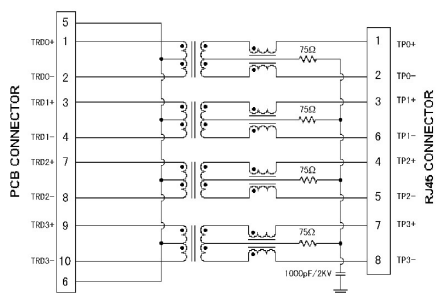


LED-P JACK  
48F-01GYDP2NL

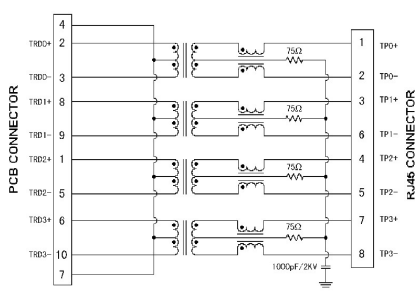


Schematics

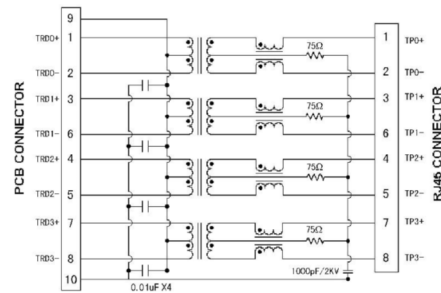
01



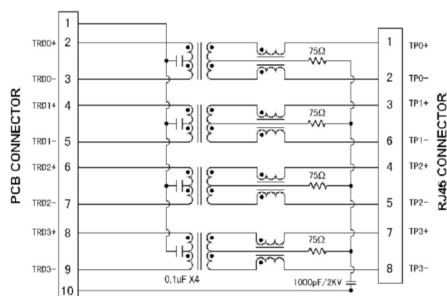
02



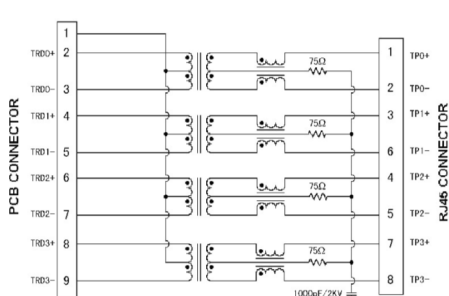
09A



10



19



20

