

FEATURES :

- 10W DIL PACKAGE
- 4:1 WIDE INPUT RANGE
- 100% BURNED IN
- HIGH EFFICIENCY
- UL94V-0 PACKAGE MATERIAL
- CUSTOMIZED SOLUTIONS AVAILABLE
- RoHS COMPLIANT
- Remote Control: On/Off

YUAN DEAN SCIENTIFIC



DC-DC Converter

68DW10-R6 SERIES

10Watt 1.5KV Isolated

4 : 1 Input Voltage Range

Single & Dual Output

1" x 1"

Specifications typical at TA=25°C, nominal input voltage and rated output current unless otherwise specified

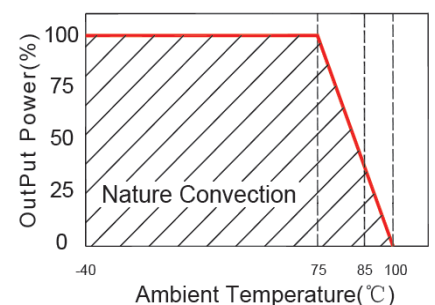
Part Number	Input Voltage	Input Current		Output Voltage	Output Current	Efficiency
	Vdc	No Load (mA TYP)	Full Load (mA TYP)	Vdc	Full Load (mA)	%TYP
68DW10-24S03R6	9-36	50	388	3.3	2400	85
68DW10-24S05R6	9-36	40	496	5	2000	84
68DW10-24S12R6	9-36	20	482	12	830	86
68DW10-24S15R6	9-36	20	474	15	660	87
68DW10-24D12R6	9-36	20	482	±12	±415	86
68DW10-24D15R6	9-36	20	474	±15	±330	87
68DW10-48S03R6	18-75	30	194	3.3	2400	85
68DW10-48S05R6	18-75	40	248	5	2000	84
68DW10-48S12R6	18-75	10	241	12	830	86
68DW10-48S15R6	18-75	10	237	15	660	87
68DW10-48D12R6	18-75	10	241	±12	±415	86
68DW10-48D15R6	18-75	10	374	±15	±330	87



Input Specifications

Parameters	Conditions	Min	Typ	Max	Units
Voltage Types				4:1	
Filter			PI Network		

Temperature Derating Graph



www.yds.com.tw



TEL : 886-6-3842899 FAX : 886-6-3843288
E-MAIL : ydsweb@yds.com.tw

Rev:0 2017/10/13

Output Specifications

Parameters	Conditions	Min	Typ	Max	Units
Voltage Tolerance	Full load@Vin(nom.)			±2	%
Short Circuit Protection	Hiccup, automatic Recovery				
Line Regulation				±0.5	%
Load Regulation	Single Dual(Balance Load)			±0.5 ±1	%
Cross Regulation	Dual (25% To 100% Load)			±5	%
Ripple & Noise	Output:3-15V TYPES BW=DC To 20MHz			100	mVp-p
Ripple & Noise	Output > 15V TYPES BW=DC To 20MHz			1% of Vout	mVp-p
Transient response setting time	25% load step change		300		us

General Specifications

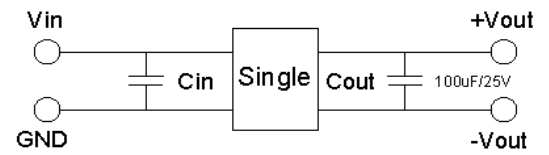
Parameters	Conditions	Min	Typ	Max	Units
Isolation Voltage			1500		Vdc
Isolation Resistance	500Vdc	1000			MΩ
Switching Frequency			400		KHz
Operating Temperature	With derating	-40		100	°C
Storage Temperature		-55		125	°C
Humidity	Non Condensing			95	%
Cooling	Free air Convection				
Case material	Nickel coated copper with no-conductive base				
MTBF	MIL-HDBK-217F@25°C	560000			Hours
Weight			16.5		g
Dimensions		25.4x25.4x10.6			mm

Part Number

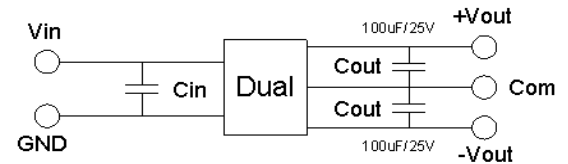
68DW10 - 24 S 05 R 6
A B C D E F

- A: Series
- B: Input Voltage
- C: Single Output(S),Dual(D)
- D: Output Voltage
- E: Regulated (R)
- F: Package

Recommended Test Circuit

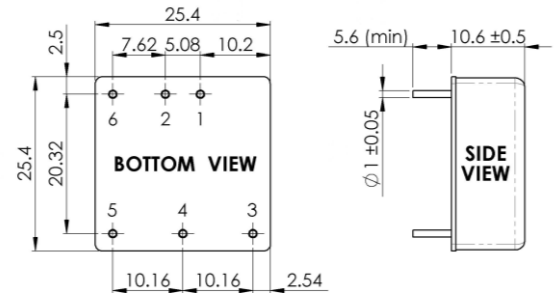


24V&48V: Cin 10uF,100V



24V & 48V :Cin 10uF,100V

Markings and dimensions



Unit : mm
Tolerance : XX.X ± 0.5 , XX.XX ± 0.25

PIN Assignment

Pin	1	2	3	4	5	6
Single	+Vin	-Vin	+Vout	Trim	-Vout	Remote On/Off
Dual	+Vin	-Vin	+Vout	Com	-Vout	Remote On/Off