

**FEATURES :**

- 4:1Wide Input Voltages Range
- High Efficiency up to 80%
- Regulated Output Types
- Low Ripple And Noise
- Internal SMD Construction
- 1.5KVDC & 3KVDC Isolation
- Operating Temperature:-40°C TO +85°C
- Industry Standard Pinout
- Continuous Short Circuit Protection With Current Foldback

Specifications typical at TA=25°C, nominal input voltage and rated output current unless otherwise specified

Part Number	Input Voltage	Output Voltage	Output Current	Efficiency
	Vdc	Vdc	mA	%TYP
27DW-24S03R3W (3KV)	9-36	3.3	700	68
27DW-24S05R3W (3KV)	9-36	5	600	70
27DW-24S09R3W (3KV)	9-36	9	333	75
27DW-24S12R3W (3KV)	9-36	12	250	78
27DW-24S15R3W (3KV)	9-36	15	200	80
27DW-48S03R3W (3KV)	18-75	3.3	700	68
27DW-48S05R3W (3KV)	18-75	5	600	70
27DW-48S09R3W (3KV)	18-75	9	333	75
27DW-48S12R3W (3KV)	18-75	12	250	78
27DW-48S15R3W (3KV)	18-75	15	200	80

**NOTE :**

No suffix is standard isolation (1.5KVDC) e.g, 27DW-24S05R3W  
 \*add suffix /3KV for 3KVDC isolation, e.g, 27DW-24S05R3W3KV

**Input Specifications**

Parameters	Conditions	Min	Typ	Max	Units
Voltage Types	Vo, Io Nom			4:1	
Filter	Capacitor				

YUAN DEAN SCIENTIFIC



DC-DC Converter

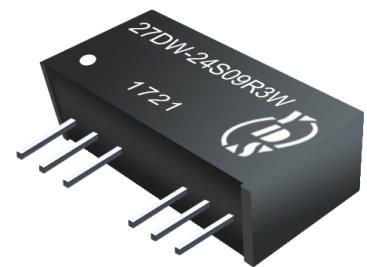
27DW-3W SERIES

3Watt 1.5KV & 3KV Isolated

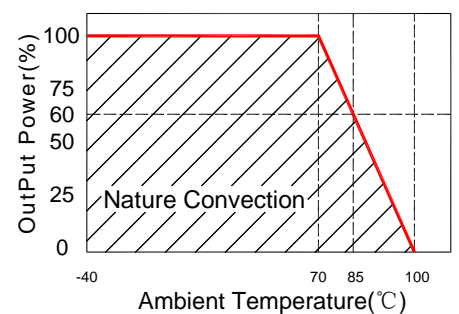
4 : 1 Input Voltage Range

Single Output

SIP8



Temperature Derating Graph



www.yds.com.tw



TEL : 886-6-3842899 FAX : 886-6-3843288  
 E-MAIL : ydsweb@yds.com.tw

Rev:0 2017/8/8

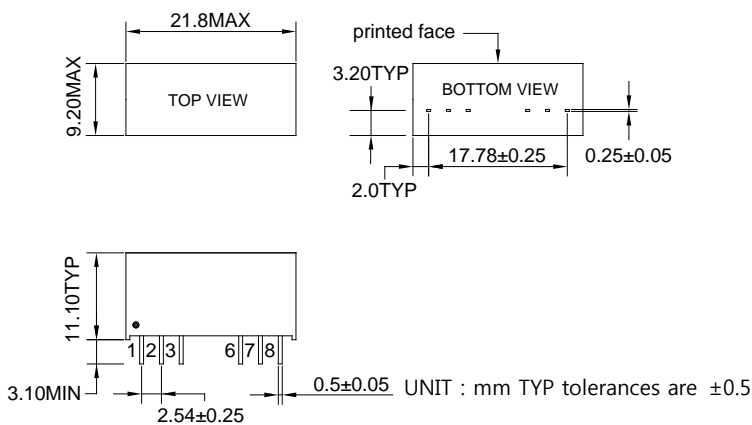
Output Specifications

Parameters	Conditions	Min	Typ	Max	Units
Voltage Tolerance	100% full load			±3	%
Short Circuit Protection	Continuous				
Line Regulation	Regulated			±0.5	%
Load Regulation	Regulated			±0.8	%
Ripple & Noise	Output:3.3V-9V TYPES BW=DC To 20MHz			100	mVp-p
Ripple & Noise	Output:12-15V TYPES BW=DC To 20MHz		1% of Vout		mVp-p
Transient response setting time	50% load step change		350		us

General Specifications

Parameters	Conditions	Min	Typ	Max	Units
Isolation Resistance	500Vdc	1000			MΩ
Switching Frequency	Full load, nominal input		100		KHz
Operating Temperature		-40		85	°C
Humidity	Non Condensing			95	%
Cooling	Free air Convection				
Case material	DAP				
MTBF	MIL-HDBK-217F @25°C	1500000			Hours
Weight			4.5		g
Dimensions			21.8x9.2x11.1		mm

Markings and dimensions

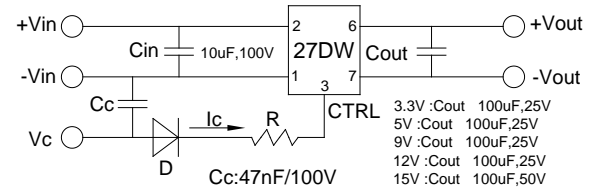


Part Number

27DW - 24 S 05 R 3W 3KV  
A B C D E F G

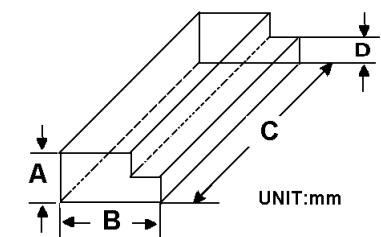
A:Series  
B:Input Voltage  
C:Single Output  
D:Output Voltage  
E:Regulated(R)  
F:Output Power  
G:Isolation Voltage

Recommended Test Circuit



- When open or high impedance, the converter works well; when this pin is 'high', the converter shut down. It should be note that the input current should be between 5-10mA, exceeding the maximum 20mA will cause permanent damage to the converter.
- To make sure the product work at perfect operation status with full loading external capacitor is necessary and it is recommended to use high frequency low resistance electrolytic capacitor.

Packaging



Size(mm)			
A	B	C	D
12.0	28.55	550	6.00

PIN Connection

Pin	1	2	3	6	7	8
Single	-Vin	+Vin	Ctrl-Control input can (can be left open)	+Vout	-Vout	NC