

**FEATURES :**

- 10 Watt DIL Package
- 4:1 Wide Input Voltage
- 100% Burned In
- High Efficiency To 85%
- Customized Solutions Available
- UL94V-0 Package Material
- Operating Temperature:-40°C TO +82°C
- 3 Years Warranty
- Medical EMC Standard of EMI EN 55011:2009 + A1:2010 (CLASS A) Approved.
- Medical EMC Standard of EMS EN 60601-1-2:2015 Approved.
- Medical/Industry/ITE Application
- I/O Isolation 5000VACrms With Reinforced Insulation · Rated For 250VAC Working Voltage

Specifications typical at TA=25°C, nominal input voltage and rated output current unless otherwise specified

Part Number	Input Voltage	Input Current		Output Voltage	Output Current	Efficiency	Capacitor load
	Vdc	No Load (mA TYP)	Full Load (mA TYP)	Vdc	Full Load (mA)	%TYP	uF MAX
68DW10-24S03RM	9-36	7	414	3.3	2500	83	4700
68DW10-24S05RM	9-36	7	496	5	2000	84	2500
68DW10-24S12RM	9-36	7	496	12	833	84	430
68DW10-24S15RM	9-36	7	499	15	670	84	270
68DW10-24D05RM	9-36	7	496	±5	±1000	84	±1250
68DW10-24D12RM	9-36	7	494	±12	±420	85	±220
68DW10-24D15RM	9-36	7	500	±15	±340	85	±135
68DW10-48S03RM	18-75	4	207	3.3	2500	83	4700
68DW10-48S05RM	18-75	4	248	5	2000	84	2500
68DW10-48S12RM	18-75	4	248	12	833	84	430
68DW10-48S15RM	18-75	4	249	15	670	84	270
68DW10-48D05RM	18-75	4	248	±5	±1000	84	±1250
68DW10-48D12RM	18-75	4	247	±12	±420	85	±220
68DW10-48D15RM	18-75	4	250	±15	±340	85	±135

**Input Specifications**

Parameters	Conditions	Min	Typ	Max	Units
Voltage Types				4:1	%
Filter			PI Network		
Protection	Fuse Recommended				
Start up Time	Constant resistive load		15		ms
Remote ON/OFF	DC-DC ON (Referred to -Vin pin)	0	Open	1.2	Vdc
	DC-DC OFF	2.2		12	Vdc

YUAN DEAN SCIENTIFIC



DC-DC Converter

68DW10-M SERIES

10Watt 5KVac Isolated

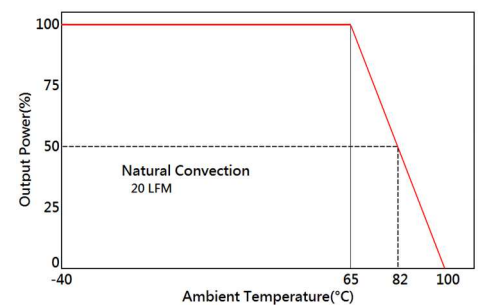
4 : 1 Input Voltage Range

Single & Dual Output

DIL



Temperature Derating Graph



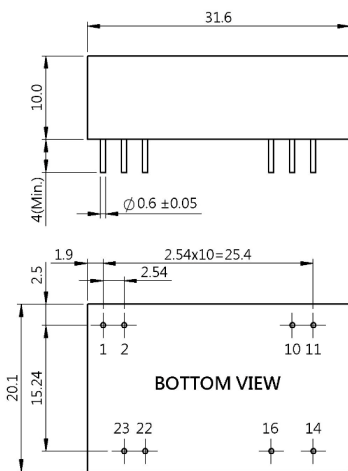
Output Specifications

Parameters	Conditions	Min	Typ	Max	Units
Voltage Tolerance	Full load @Vin(nom.)			±2	%
Short Circuit Protection	Hiccup, automatic Recovery				
Line Regulation				±0.5	%
Load Regulation	Single			±0.5	%
	Dual(Balance Load)			±0.5	%
Cross Regulation	Dual			±5	%
	(25% To 100% Load)				
Ripple & Noise	Output:3-15V TYPES BW=DC To 20MHz			100	mVp-p
	Output > 15V TYPES BW=DC To 20MHz			1% of Vout	mVp-p
Transient response setting time	25% load step change		350		us
External Trim Adj. Range				±10	%

General Specifications

Parameters	Conditions	Min	Typ	Max	Units
Isolation Voltage	I/P to O/P				
	Reinforced insulation for 250VAC working voltage			5000	Vac
Isolation Resistance	500Vdc	1000			MΩ
Switching Frequency			300		KHz
Operating Temperature	Refer to temperature derating graph	-40		82	°C
	(with derating)				
Storage Temperature		-55		125	°C
Case Temperature				+95	°C
Humidity	Non Condensing	5		95	%
Cooling	Natural Convection (20LFM)				
Case material	Plastic				
MTBF	MIL-HDBK- 217F@25°C	900000			Hours
Weight			13.5		g
Dimensions		31.6x20.1x10.0			mm

Dimensions



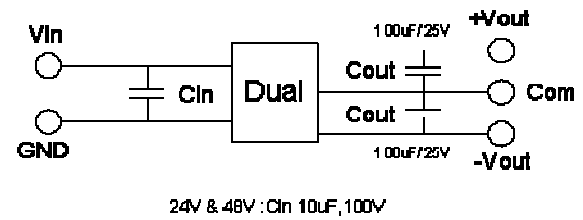
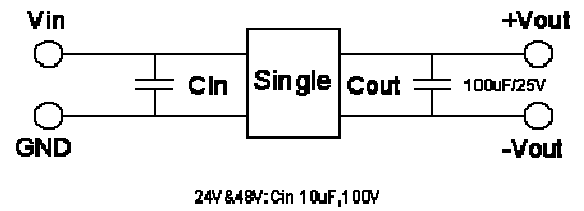
Unit : mm  
Tolerance : XX.X ±0.5 · XX.XX ±0.25

Part Number

68DW10 - 24 S 03 R M  
A B C D E F

- A: Series
- B: Input Voltage
- C: Single Output(D),Dual(D)
- D: Output Voltage
- E: Regulated (R)
- F: Medical Application

Recommended Test Circuit



PIN Assignment

Pin	1	2	10	11	14	16	22	23
Single	Remote ON/OFF	-Vin	Trim	No pin	+Vout	-Vout	+Vin	+Vin
Dual	Remote ON/OFF	-Vin	Trim	-Vout	+Vout	Com	+Vin	+Vin

